

Best Airport in North America

Business Traveler Magazine
2005, 2006, 2007, and 2008

Best Airport in North America

Travel Savvy Magazine, 2005

Number One Major Airport in the U.S. for On-Time Arrivals

Federal Aviation Administration, 2005

America's Best-Run Airport

Time Magazine, 2002

Among the Top Five U.S. Airports

The Wall Street Journal, 2001

Overview/Background

Since opening on February 28, 1995, Denver International Airport has become the world's 10th-busiest airport and the 5th-busiest airport in the United States. With 51.2 million passengers in 2008, DEN is one of the busiest domestic hubs in the world's largest aviation market, the United States, and is the primary economic engine of the state of Colorado, generating more than \$22 billion in annual economic impact.

Denver International Airport is one of the few major U.S. airports with room to expand its current facilities to accommodate future growth. Encompassing 53 square miles (137.8 square kilometers) of land, Denver International Airport is twice the size of Manhattan Island, and is larger than the city boundaries of Boston, Miami, or San Francisco. DEN is the largest airport site in North America and the second-largest in the world. The efficient layout of six non-intersecting runways allows for multiple simultaneous aircraft movements. DEN has capacity for six more runways, another terminal, and two additional concourses. Denver's Runway 16R/34L, which runs north-south and is 16,000 feet long, is the longest commercial runway in the United States. It is one of the reasons DEN has received ICAO certification to handle Airbus 380 operations.

The airport is owned by the City and County of Denver and is operated by the Denver Department of Aviation. The \$4.9 billion city investment in the design and construction of Denver International Airport was financed by a combination of airport bonds, federal aviation grants, and monies generated by Denver's former airport, Stapleton International. Through early and steadfast planning, DEN has gained significant recognition for financial stability, and has been profitable every year since opening. And, through an innovative revenue sharing plan, Denver International has shared its profits every year with its signatory airline partners.

DIA's award-winning architecture and magnificent views of the Rocky Mountains create a unique atmosphere for travelers. The terminal's internationally recognized fiberglass roof is reflective of mountains and evokes the early history of Colorado when Native American teepees were scattered across the Great Plains. Denver International Airport is also home to one of the largest collections of public art in Colorado, and the artwork provides travelers an opportunity to take a visual journey through Colorado's diverse history.

With strategic planning and strong leadership, Denver International Airport will continue to lead the way and shape the future of the aviation industry through efficient operations, sound financial management, and an emphasis on customer service.

DENVER INTERNATIONAL AIRPORT AT A GLANCE

Ownership and Operation	City & County of Denver, Department of Aviation
Opening date	February 28, 1995
Location	23 miles northeast of downtown Denver Latitude: 39 degrees, 50 minutes, 57.8 seconds Longitude: 104 degrees, 40 minutes, 23.9 seconds Elevation: 5,431 feet
Size	34,000 acres (53 square miles/137.8 square kilometers)
Runways	Six runways: five 12,000 feet in length (3,600 meters); one 16,000 feet in length (4,800 meters) <i>12 runways at complete build-out</i>
Elrey B. Jeppesen Terminal	1.5 million square feet (dual-sided) <i>Two terminal buildings at complete build-out</i>
Passenger Facilities	Ticketing – Level 6 Baggage Claim – Level 5 Passenger Drop-off – Level 6 Passenger Pick-up – Level 4 Ground Transportation – Level 5 International Arrivals – Level 5 north
Security Screening	Three locations in the terminal
Parking	38,000 spaces
Automated People Mover	Underground train serving the terminal and concourses
Concourses	Three airside concourses – A, B and C <i>Five concourses at complete build-out</i>
Concourse A	1,900 feet long, 1,220,000 square feet
Concourse B	3,300 feet long, 2,033,872 square feet
Concourse C	1,500 feet long, 750,000 square feet
Gates	95 (plus 16 gates in Concourse B's Regional Jet Facility) <i>300 gates at complete build-out</i>
Annual Passenger Capacity	50 million - <i>110 million at complete build-out</i>
Airlines	16 commercial airlines, not including charter and regional carriers, offer nonstop service to more than 140 destinations worldwide
Passengers per Day	140,398 in 2008
Average Flights per Day	1,789 in 2008



AIRFIELD EFFICIENCY AT DENVER INTERNATIONAL AIRPORT

Denver International Airport consistently ranks as one of the least-delayed major airports in the United States

The efficiency of Denver International Airport is due to the airfield design, which includes wide spacing between the airport's three concourses. This allows aircraft to push back from the gate without waiting for planes to taxi past. In addition, DIA does not have any intersecting runways, and the spacing between runways allows for three simultaneous landings even in poor weather.

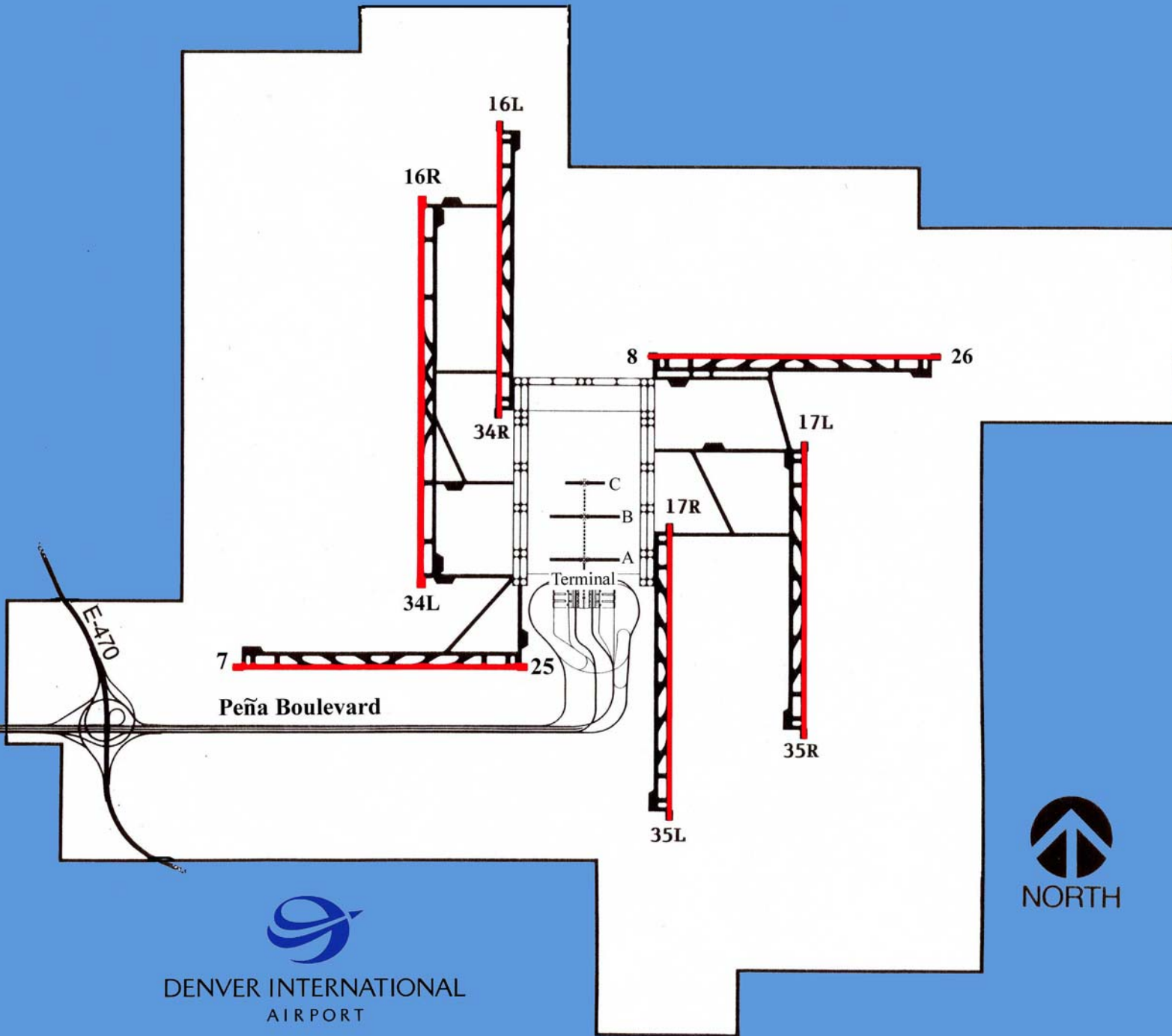
Denver International Airport has consistently maintained a safe airfield and has been recognized by the Federal Aviation Administration as one of the top airports in the nation for airfield operational safety. This exemplary record, combined with the ongoing dedication to safety and efficiency by our airport operational managers is why the FAA named Denver International Airport as the least-delayed airport in the nation for four consecutive years.

OPERATIONS PROFILE

- ☞ Capability for triple simultaneous CAT IIIB arrivals
- ☞ No intersecting runways
- ☞ No operational curfews



DENVER INTERNATIONAL AIRPORT AIRFIELD / TERMINAL LAYOUT



Nonstop Destinations Served from Denver (DEN)



Nonstop Destinations

DESTINATION	CODE	DESTINATION	CODE	DESTINATION	CODE	DESTINATION	CODE
Akron/Canton, OH	CAK	Durango, CO	DRO	Los Angeles, CA	LAX	Puerto Vallarta, Mexico	PVR
Alamosa, CO	ALS	Edmonton, Canada	YEG	Los Cabos, Mexico	SJD	Raleigh/Durham, NC	RDU
Albuquerque, NM	ABQ	El Paso, TX	ELP	Madison, WI	MSN	Rapid City, SD	RAP
Amarillo, TX	AMA	Eugene, OR	EUG	Mazatlan, Mexico	MZT	Redmond, OR	RDM
Anchorage, AK	ANC	Fargo, ND	FAR	McCook, NE	MCK	Regina, Canada	YQR
Appleton, WI	ATW	Farmington, NM	FMN	Medford, OR	MFR	Reno, NV	RNO
Aspen, CO	ASE	Fayetteville, AR	XNA	Memphis, TN	MEM	Riverton, WY	RIW
Atlanta, GA	ATL	Frankfurt, Germany	FRF	Mexico City, Mexico	MEX	Rock Springs, WY	RKS
Austin, TX	AUS	Fresno, CA	FAT	Miami, FL	MIA	Sacramento, CA	SMF
Bakersfield, CA	BFL	Ft. Lauderdale, FL	FLL	Milwaukee, WI	MKE	Salt Lake City, UT	SLC
Baltimore, MD	BWI	Garden City, KS	GCK	Minneapolis/St. Paul, MN	MSP	San Antonio, TX	SAT
Billings, MT	BIL	Gillette, WY	GCC	Missoula, MT	MSO	San Diego, CA	SAN
Birmingham, AL	BHM	Grand Junction, CO	GJT	Moab, UT	CNY	San Jose, CA	SJC
Bismarck, ND	BIS	Grand Rapids, MI	GRR	Moline, IL	MLI	San Jose, Costa Rica	SJO
Boise, ID	BOI	Great Bend, KS	GBD	Monterey, CA	MRY	San Francisco, CA	SFO
Boston, MA	BOS	Great Falls, MT	GTJ	Montrose, CO	MTJ	Santa Barbara, CA	SBA
Bozeman, MT	BZN	Gunnison, CO	GNC	Montreal, Canada	YUL	Saskatoon, Canada	YXE
Burbank, CA	BUR	Hays, KS	HYS	Nashville, TN	BNA	Scottsbluff, NE	BFF
Calgary, Canada	YYC	Helena, MT	HLN	New Orleans, LA	MSY	Seattle/Tacoma, WA	SEA
Cancun, Mexico	CUN	Honolulu, HI	HNL	New York (Kennedy), NY	JFK	Sheridan, WY	SHR
Casper, WY	CPR	Houston (George Bush), TX	IAH	New York (LaGuardia), NY	LGA	Sioux Falls, SD	FSD
Cedar Rapids/Iowa City, IA	CID	Houston (Hobby), TX	HOU	Newark, NJ	EWR	Spokane, WA	GEG
Chadron, NE	CDR	Huntsville/Decatur, AL	HSV	North Platte, NE	LBF	Springfield, MO	SGF
Charlotte, NC	CLT	Idaho Falls, ID	IDA	Oakland, CA	OAK	St. Louis, MO	STL
Cheyenne, WY	CYS	Indianapolis, IN	IND	Oklahoma City, OK	OKC	Steamboat Springs, CO	HDN
Chicago (Midway), IL	MDW	Ixtapa/Zihuatanejo, Mexico	ZIH	Omaha, NE	OMA	Tampa, FL	TPA
Chicago (O'Hare), IL	ORD	Jackson, WY	JAC	Ontario, CA	ONT	Telluride, CO	TEX
Cincinnati, OH	CVG	Kahului, HI	OGG	Orange County, CA	SNA	Toronto, Canada	YYZ
Cleveland, OH	CLE	Kalispell, MT	FCA	Orlando, FL	MCO	Traverse City, MI	TVC
Cody, WY	COD	Kansas City, MO	MCI	Ottawa, Canada	YOW	Tucson, AZ	TUS
Colorado Springs, CO	COS	Kearney, NE	EAR	Palm Springs, CA	PSP	Tulsa, OK	TUL
Columbus, OH	CMH	Knoxville, TN	TYS	Pasco, WA	PSC	Vail, CO	EGE
Cortez, CO	CEZ	Kona, HI	KOA	Peoria, IL	PIA	Vancouver, Canada	YVR
Cozumel, Mexico	CZM	Laramie, WY	LAR	Philadelphia, PA	PHL	Vernal, UT	VEL
Dallas/Ft. Worth, TX	DFW	Las Vegas, NV	LAS	Phoenix, AZ	PHX	Washington (Dulles), DC	IAD
Dayton, OH	DAY	Liberal, KS	LBL	Pierre, SD	PIR	Washington (Reagan), DC	DCA
Des Moines, IA	DSM	Lihue, HI	LIH	Pittsburgh, PA	PIT	Wichita, KS	ICT
Detroit, MI	DTW	Lincoln, NE	LNK	Portland, OR	PDX	Winnipeg, Canada	YWG
Dickinson, ND	DIK	Little Rock, AR	LIT	Pueblo, CO	PUB	World, WY	WRL
Dodge City, KS	DDC	London (Heathrow), UK	LHR				

Some destinations served seasonally. / Indicates international destination / Updated 07-01-09
Source: Official Airline Guide (OAG) Schedule Tapes.

Scheduled Airlines

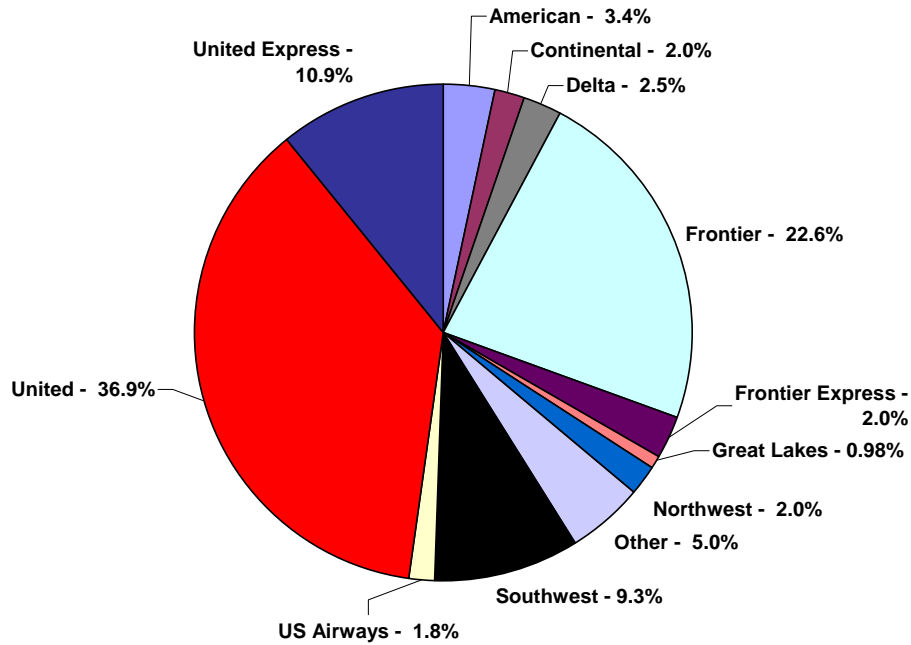


DIA PASSENGER TRAFFIC STATISTICS

Denver International Airport is home to 16 commercial airlines, not including regional carriers and charters, which offer more than 140 domestic and international destinations with nonstop service. DIA served 51.3 million passengers in 2008, ranking as the fifth-busiest airport in North America. Through the end of 2008, DIA passenger volume was almost 3 percent above 2007's volume.

The chart below shows the 2008 market shares of carriers operating at Denver International.

Airline Market Share at DIA – 2008



COMMERCIAL PASSENGER AIRLINES OPERATING AT DIA

Airline	Telephone Number	Web Site
Air Canada	(888) 247-2262	www.aircanada.com
AirTran Airways	(800) 247-8726	www.airtran.com
Alaska Airlines	(800) 252-7522	www.alaskaair.com
American Airlines	(800) 433-7300	www.aa.com
American Connection: Trans States Airlines	(800) 433-7300	www.transstates.net
British Airways	(800) 247-9297	www.britishairways.com
Continental Airlines	(800) 523-3273	www.continental.com
Continental Express: ExpressJet	(800) 523-3273	www.expressjet.com
Delta Air Lines	(800) 221-1212	www.delta.com
Delta Connection: Comair	(800) 221-1212	www.comair.com
SkyWest Airlines	(800) 221-1212	www.skywest.com
Frontier Airlines/Lynx Aviation	(800) 432-1359	www.flyfrontier.com
Great Lakes Airlines	(800) 554-5111	www.greatlakesav.com
JetBlue Airways	(800) 538-2583	www.jetblue.com
Lufthansa German Airlines	(800) 399-5838	www.lufthansa.com
Mexicana Airlines	(800) 531-7921	www.mexicana.com
Midwest Airlines	(800) 452-2022	www.midwestexpress.com
Northwest Airlines	(800) 225-2525	www.nwa.com
NW Airlink: Pinnacle Airlines	(800) 603-4594	www.nwairlink.com
Southwest Airlines	(800) 435-9792	www.southwest.com
United Airlines	(800) 864-8331	www.united.com
United Express:		
GoJet Airlines	(800) 241-6522	www.gojetairlines.com
Mesa Airlines	(800) 241-6522	www.mesa-air.com
Shuttle America	(800) 241-6522	www.shuttleamerica.com
SkyWest Airlines	(800) 241-6522	www.skywest.com
US Airways	(800) 428-4322	www.usairways.com

*This list does not include charter airlines

2008 WORLD AIRPORT PASSENGER TRAFFIC

Denver International ranked as the 10th-busiest airport in the world
(Year Ending December 2008)

<u>Airport</u>	<u>Total Passengers</u>
1. Atlanta (ATL)	90,039,280
2. Chicago (ORD)	69,353,876
3. London/Heathrow (LHR)	67,056,228
4. Tokyo/Haneda (HND)	66,735,587
5. Paris (CDG)	60,851,998
6. Los Angeles (LAX)	59,497,539
7. Dallas/Fort Worth (DFW)	57,093,187
8. Beijing (PEK)	55,662,256
9. Frankfurt (FRA)	53,467,450
10. Denver (DEN)	51,245,334
11. Madrid (MAD)	50,823,105
12. Hong Kong (HKG)	47,898,000
13. New York City (JFK)	47,790,485
14. Amsterdam (AMS)	47,429,741
15. Las Vegas (LAS)	44,074,707

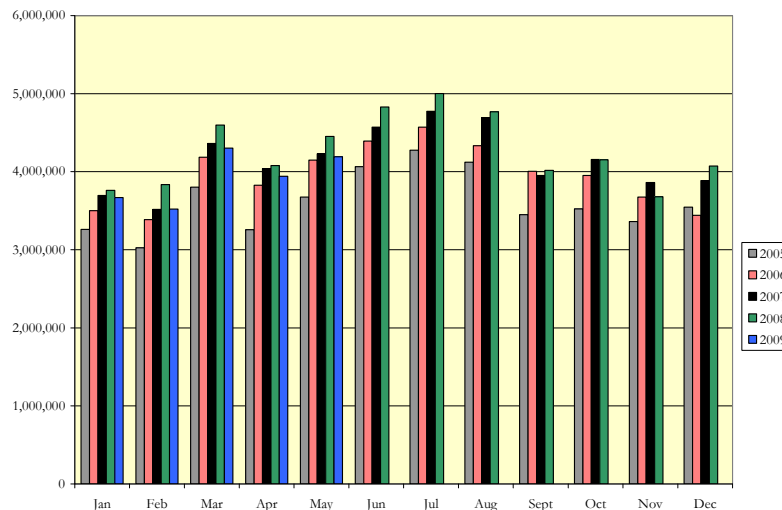
Source: Airports Council International – North America

DENVER PASSENGER TRAFFIC SINCE JANUARY 2005

Monthly Passenger Traffic

DIA passenger traffic reached a record 51.3 million passengers in 2008

Source: Denver International Airport



Environmental Management and Sustainability

Denver International Airport is world-renowned for its Environmental Management System (EMS), which provides a systematic approach to managing the airport's environmental impacts and to promoting and encouraging continual environmental performance improvement. DIA's environmental management has established many firsts in the United States and internationally:

- DIA is the first international airport in the United States to develop and implement a facility-wide EMS certified to the ISO 14001 standard (2004)
- First U.S. airport to be accepted into the Environmental Protection Agency's National Environmental Performance Track Program (2006)
- Received the FAA Environmental Stewardship Award (2007)
- Accepted into Colorado's environmental leadership program as a Gold Level member (2004)
- Active participant in local and state sustainability initiatives, including Greenprint Denver and Colorado Action Climate Plan

Solar Farm

In mid 2008, Denver International Airport inaugurated a solar farm situated on 7.5 acres (3 hectares) directly south of Jeppesen Terminal between Peña Boulevard's inbound and outbound lanes.

The solar farm consists of more than 9,200 solar panels that follow the sun to maximize efficient energy production and generate more than 3 million kilowatt hours of electricity per year. The system – designed and built by WorldWater & Solar Technologies – is owned and operated by MMA Renewable. The energy generated by the solar park supplies a quantity of electricity equal to half of the power required annually to operate the airport's people-mover train system. By using this solar-generated power, DIA will reduce its carbon emissions as much as five million pounds each year. Aviation Manager Kim Day noted DIA's "long-standing commitment to sustainable operations and environmental protection."

Global Reporting Initiative and Sustainability Guidelines for Airports

Denver International Airport has joined forces with nine other international airports and the Global Reporting Initiative to establish sustainability guidelines for the aviation industry. DIA and its international airport partners have turned to

the GRI as the creator of the most widely used framework for sustainability reporting. Hundreds of companies in all sectors already use GRI's main "G3 Guidelines" for their reporting. The 10 participating airports are: Athens Eleftherios International, Cancun Airport International; German international airports Frankfurt and Munich; Kuala Lumpur International; Toronto Pearson International; Zurich Airport in Switzerland, and Denver, Portland, and San Diego in the United States. During 2009 and 2010, GRI will work together with airports and their stakeholders (employees, investors, customers, communities, non-governmental agencies and others) to create a customized set of reporting indicators for airports

FasTracks

As part of metropolitan Denver's FasTracks commuter- and light-rail expansion program, an airport commuter train is set to go into operation in 2015. The train will whisk passengers between the airport and Downtown Denver's Union Station in less than an hour—relieving commuter traffic on Denver's highways and roads and providing a real alternative mode of transport to cars and buses.

The DIA Advantage: Location, Location, Location

According to a 2008 poll conducted by the Washington, D.C.-based Pew Research Center, Denver is the most desirable big city to call home in the United States. VisitDenver.org, the official Web site of Visit Denver, the city's convention and visitors bureau, calls Denver the perfect blend of outdoor adventure and urban sophistication. With snowcapped peaks providing a spectacular backdrop, Denver is as refined as it is laid-back. It's a place where aerospace engineers rub elbows with rock climbers at local brewpubs, at art festivals, or while strolling along their favorite pedestrian mall. And with an average 300 days of sunshine a year, it's easy to see why people fall in love with Denver the first time they visit.

Metro Denver has a population of 2.7 million people, with a growth rate that has consistently outpaced the national rate every decade since the 1930s. The region continued to grow steadily during the past decade, averaging 2 percent population growth each year from 1997 to 2007. And by 2030, Metro Denver's population is anticipated to increase by nearly 50 percent to almost 3.9 million, with 800,000 new jobs being created. Colorado and the region have become a vital center for research and development of alternative energy, and will continue to draw well-educated and affluent workers to the area to support the rapidly developing energy market—residents who will purchase premium tickets for both business and leisure travel. The Mile High City is an attractive market for airlines because it has one of the nation's strongest metropolitan economies. Median household income in the Metro Denver area is 15.6 percent higher than the national average.